

# ZISHÉL

P R E M I U M   H A   F I L L E R



## Z I S H É L   R O S E   G L A M   C H A R A C T E R

---

license from  
**MFDS**

Our filler has been deemed  
"completely safe for penile  
enlargement treatment"

with lidocaine  
**FIRST**

The first lidocaine containing  
hyaluronic filler intended for  
Penile Enhancement in Korea

What

## ● ZISHÉL ROSE GLAM Permission

**Purpose of use:** Via injections of cross-linked hyaluronic acid (containing lidocaine) underneath the corium of penile skin, patients with micropenia syndrome can expect to experience an increase in the circumference of the penis.

**Compositional ingredients:** Cross-linked hyaluronic acid(20mg/ml)  
+ \*Lidocaine hydrochloride(3mg/ml)

**License No.:** 18-640

**Contents:** 10ml

**Shelf-life:** 36 months

Why

## ● Why ZISHÉL ROSE GLAM ?

Presently, those looking for penile enlargement procedures have frequently used fillers licensed for facial applications only. While differentiating uses are plausible according to the National Health Insurance Act, one must exercise great caution when considering possible reactions, side effects and bodily responses when undergoing a penile enlargement procedure using a designated facial filler.

Furthermore, issues may arise with insurance companies as each company may apply differentiating standards for the use of products other than that of intention.

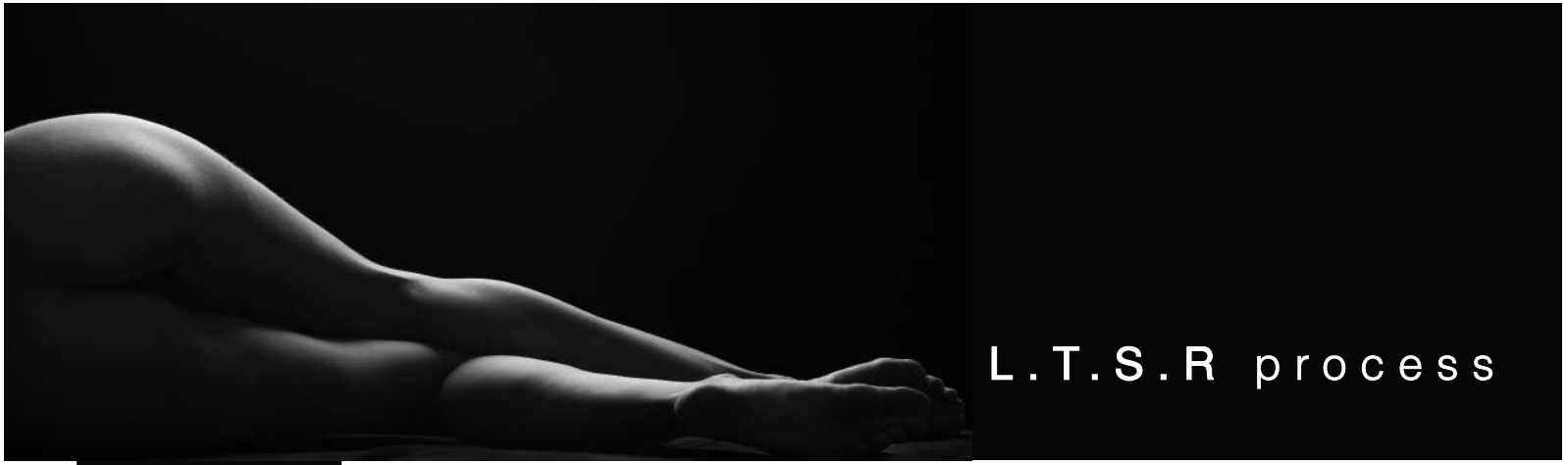




## L . T . S . R (Low-temperature Stabilization Reaction) p r o c e s s

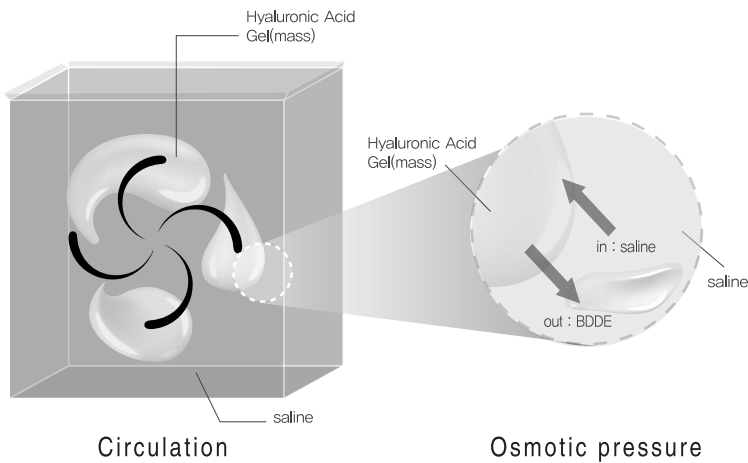
---

In order for **ZISHÉL ROSE GLAM** To maintain the smallest distance between the hyaluronic acid molecules, we have applied a Low Temperature Stabilization Reaction (LTSR). Resultantly, this reaction process formed a hyaluronic acid GEL with a tight molecular structure and a high density.



# L.T.S.R process

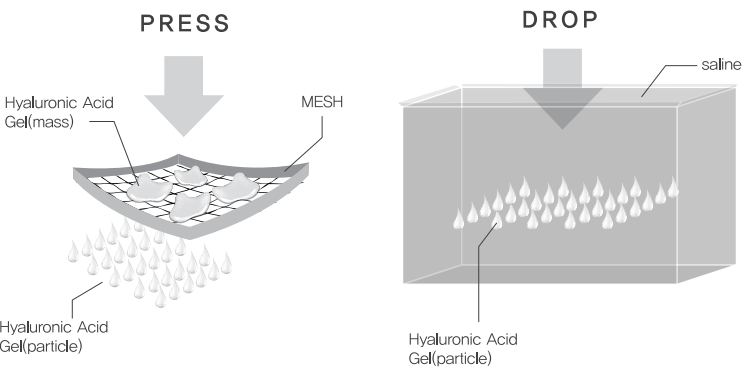
## 1st Purification process



### 1st Purification

By immersing and circulating the hyaluronic acid Gel for which reaction has been completed in saline solution directly, surface of the hyaluronic acid Gel is cleansed, and internal byproducts are substituted for long time.

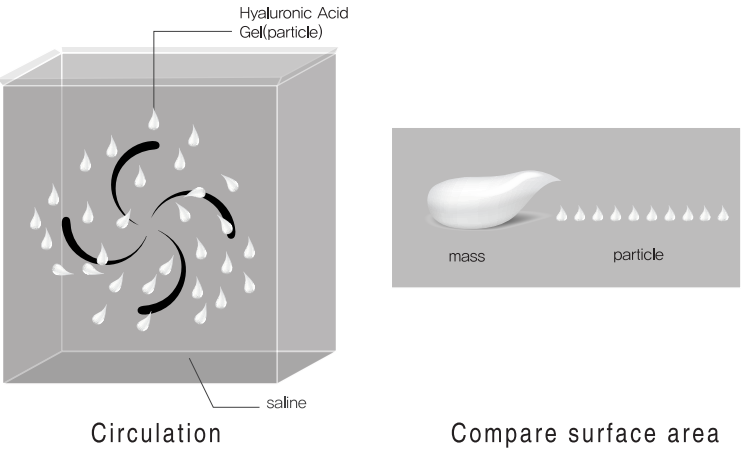
## Pulverization process



### Pulverization process

Gel that has undergone 1st Purification is passed through mesh for pulverization into smaller particles to maximize the surface area for cleansing.

## 2nd Purification process



### 2nd Purification

By repeating immersion and circulating of hyaluronic acid particles with increased surface area through pulverization in saline solution, the surface of the hyaluronic acid Gel is further cleansed, and internal byproducts are substituted for long time.

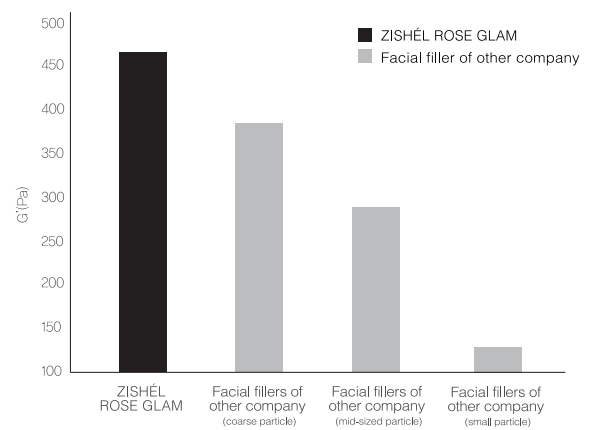


## L.T.S.R process

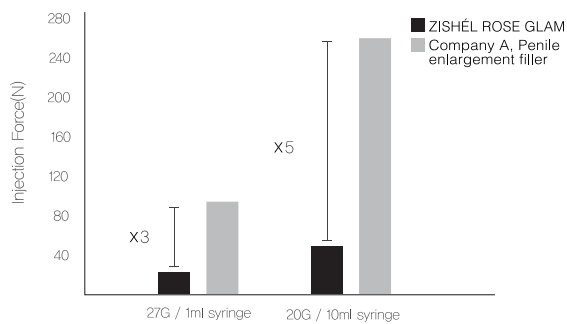
### ■ HIGH ELASTICITY

ZISHÉL ROSE GLAM boasts an elasticity value ( $G'$ ) greater than that of facial fillers, thus exhibiting excellent restoration abilities and gives way for ease of molding after the procedure.

Elasticity value comparison test with facial fillers of other company



Injectability test for comparison with the penile enlargement filler of other company



### ■ LOW INJECTION FORCE

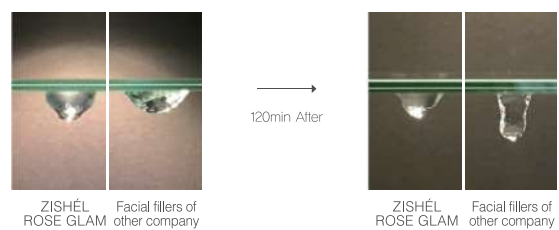
Although historically injectability increases as the content of a product increases, our ZISHÉL ROSE GLAM (10ml) has an injectability similar to that of Monophasic facial fillers that boast contents of 1ml.

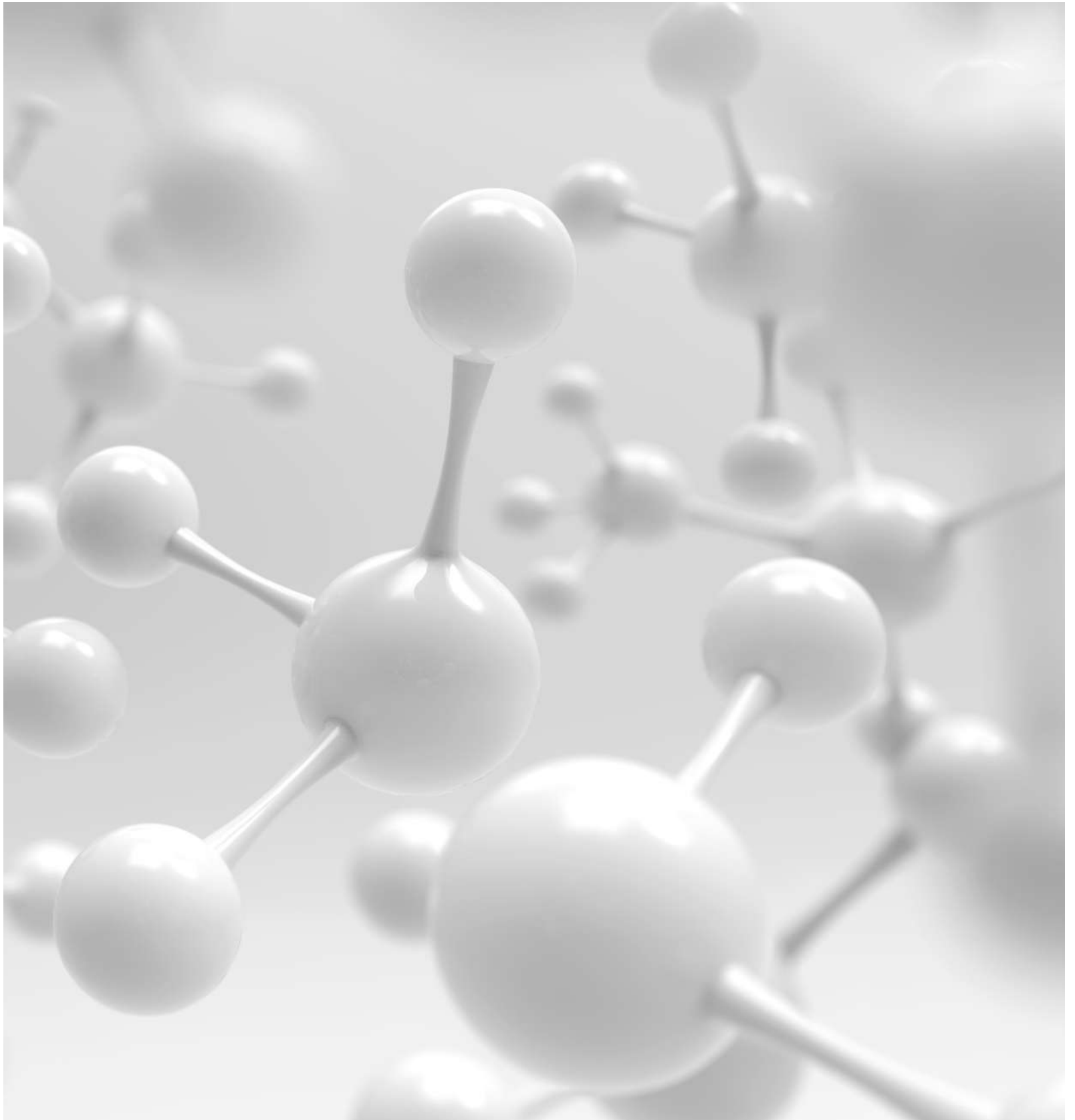
Our low level of injectability allows surgeons to use less force and exercise great precision when deploying the filler thus increasing the satisfaction of both the patient and the surgeon alike.

### ■ EXCELLENT ADHESIVENESS

Due to ZISHÉL ROSE GLAM's strong cohesiveness between particles, the adhesion properties increase greatly thus allowing for an easier construction of desired shapes. As the particles adhere to the tissues more effectively, this results in a minimization of movement in the body therefore generating a more favored shape post procedure.

Adhesiveness test by comparing with facial fillers of other company





## 2-STEP PURIFICATION PROCESS

---

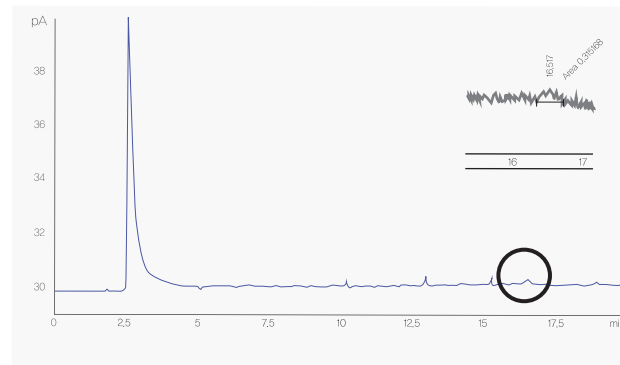
During the purification process, hyaluronic acid gel is exposed directly to saline.  
The Saline solution cleans both BDDE and the external surface  
which potentially also results in saline moving into the hyaluronic acid gel via basic osmosis.

# 2-Step Purification Process

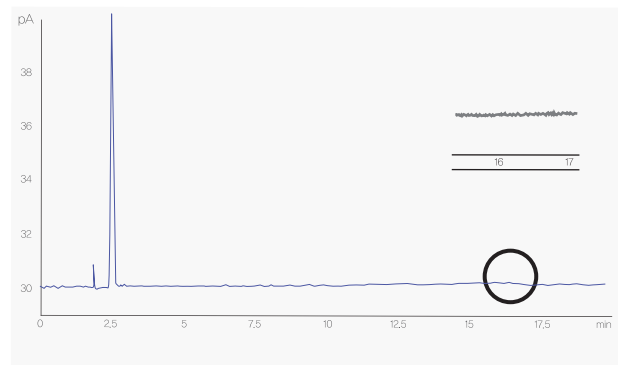
## HIGH SAFETY

Through our 2-step Purification System we have substantially minimized the possible residual BDDE and byproducts of the manufacturing process; thus, dramatically increasing the safety of our product. Cha Meditech has set the limit of detection (LOD) at 1ppm, which is lower than the standard for approval of the product at 2ppm, through GC analysis and is managing our manufacturing procedures to ensure that there is **no residual BDDE detected**.

● At the time of BDDE detection



● BDDE detection test for ZISHÉL ROSE GLAM

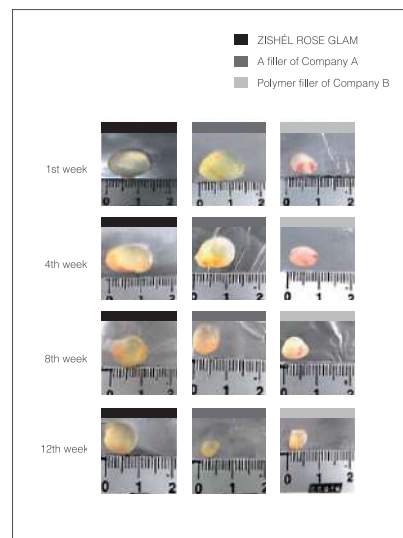


Ref.: Results of measurement by the Dermatology Science Lab of Medical College of Chung Ang University

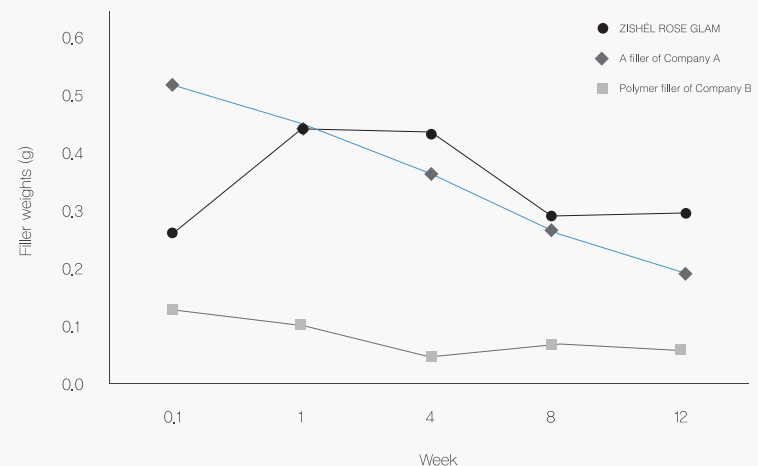
## LONG LASTING VOLUME

When observing the results of the “Test for comparison of sustainability by using mouse” study, (executed to ensure the sustainability of our product) after we weeks ZISHÉL ROSE GLAM exhibited the largest quantity of product remaining in the body in comparison to other products in the same category (HA Fillers and Polymer Fillers). As such, it was confirmed that ZISHÉL ROSE GLAM is capable of maintaining its post procedure volume longer than any other filler in the comparison control group.

● Observation of progresses over 12-week period after having injected filler into the back of MOUSE



● Graph on the weight change over 12-week period after having injected filler into the back of MOUSE



Ref.: Tissue Regeneration Engineering Lab of Bio-engineering Department of Cha Medical College



## CLINICAL TEST

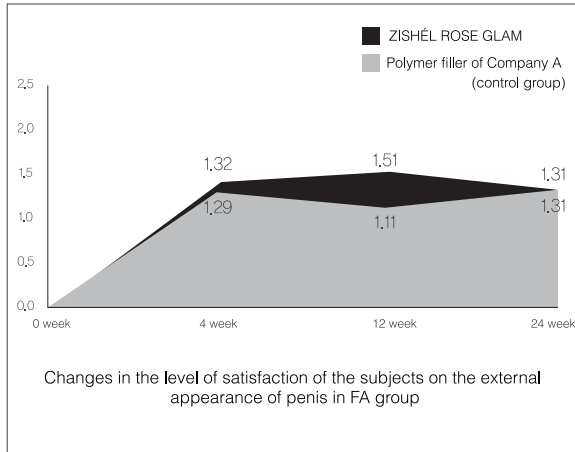
---

As resulted by a highly reputable clinical institution in Korea, ZISHÉL ROSE GLAM was proven to be a highly outstanding product when considering the measurement changes in both the circumference and length of areas injected. Furthermore, ZISHÉL ROSE GLAM was given exceptional ratings of satisfaction by both clients and experts.

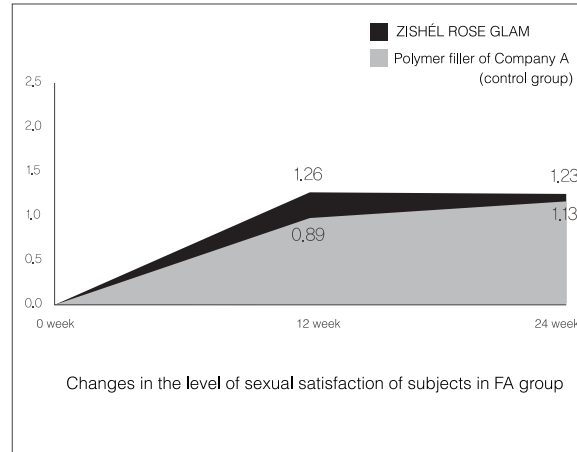
## Evaluation of the level of satisfaction

In comparison to the control group, after a 24-week period post-procedure, ZISHÉL ROSE GLAM produced **approximately 15% - 20% higher** levels of satisfaction on both the external appearance of the penis in addition to sexual satisfaction.

● Level of satisfaction of the subjects on the external appearance of penis – FA group



● Level of sexual satisfaction of subjects – FA group

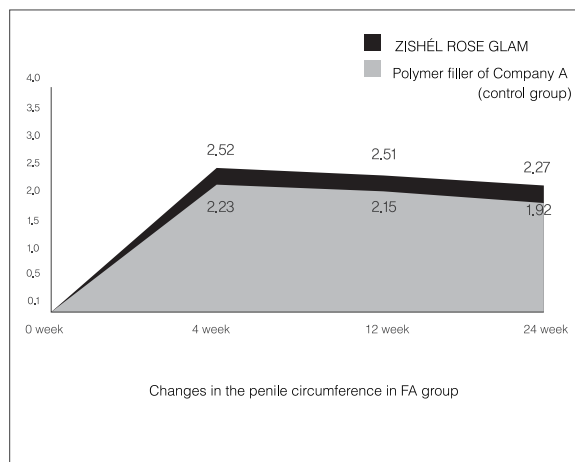


Gangdong Sacred Heart Hospital of Hallym University: 2016.11.24 ~ 2017.11.07  
 Chuncheon Sacred Heart Hospital of Hallym University: 2017.02.09 ~ 2017.11.02  
 Dongtan Sacred Heart Hospital of Hallym University: 2016.12.02 ~ 2017.10.27

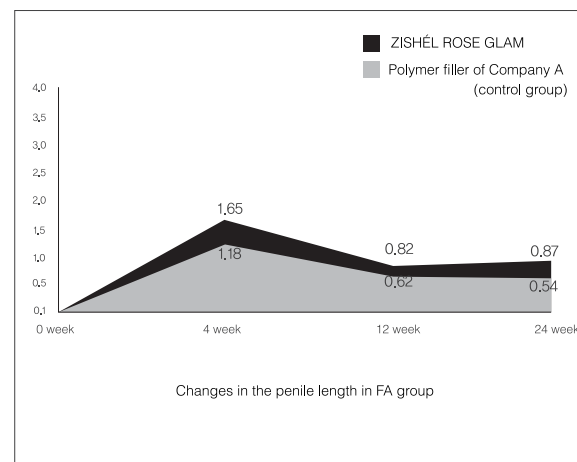
## Evaluation of increase in circumference and length

In comparison to other polymer fillers used for penile enlargement, ZISHÉL ROSE GLAM upheld its circumference and length increases after 24 weeks of the procedure with **approximately 15% and 40% greater effects** in penile circumference and length respectively.

● Changes in the penile circumference – FA group



● Level of sexual satisfaction of subjects – FA group



Gangdong Sacred Heart Hospital of Hallym University: 2016.11.24 ~ 2017.11.07  
 Chuncheon Sacred Heart Hospital of Hallym University: 2017.02.09 ~ 2017.11.02  
 Dongtan Sacred Heart Hospital of Hallym University: 2016.12.02 ~ 2017.10.27



ZISHEL BD HQ ►  
SEOUL



ZISHEL LOGISTICS HQ ▲  
INCHEON  
ZISHEL LABORATORIE HQ  
PARIS, FRANCE ►



ZISHEL MANUFACTURING HQ  
WONJU ▼



*We Envision Lives and Lifestyles.*

# ■ ZISHEL GROUP

As a COU (Center of Unification) for a group of companies and operating units, **ZISHEL GROUP** is led by Mr. Jimmy JongWoo Kim and Dr. James Min Kim since 2016 to promote the synergies between the companies while sharing the most dynamic and innovative business routes and cultural values.

**ZISHEL GROUP** strives to ensure the long-term development of each of its 12 operating units and companies in keeping with their identities, mission statements, and expertise. **ZISHEL GROUP** is the only group present in all 5 major sectors of the life and life-style concerning markets: General Medicine, Aesthetic Medicine, Pharmaceuticals, Cosmetics & Appliances, Selective Logistics and Retailing.





**WE DISTRIBUTE LIFE**

[www.zishel.com](http://www.zishel.com)

**ZISHEL**  
GROUP